

## Sapphire Sweetness

By Nick Fabri, July 2016

Angles for R.I. = 1.760

89 + 16 girdles = 105 facets

8-fold, mirror-image symmetry

96 index

$L/W = 1.000$   $T/W = 0.414$   $U/W = 0.414$

$P/W = 0.503$   $C/W = 0.121$

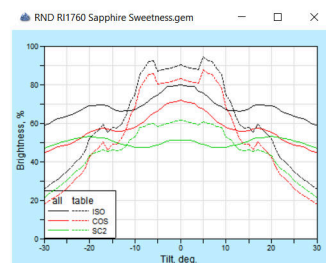
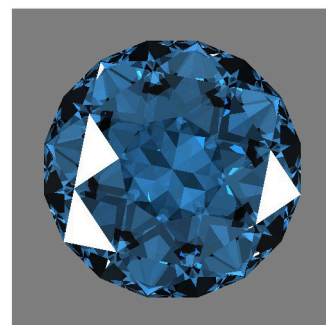
$Vol./W^3 = 0.241$

### PAVILION

P1	59.46°	96-06-12-18-24-30-36-42-48-54-60-66-72-78-84-90	Cut all facets equal
P2	90.00°	96-06-12-18-24-30-36-42-48-54-60-66-72-78-84-90	Establish level girdle line
P3	53.43°	09-21-33-45-57-69-81-93	Meet P1,P2
P4	39.88°	09-21-33-45-57-69-81-93	Meet P1,P3
P5	42.87°	96-06-12-18-24-30-36-42-48-54-60-66-72-78-84-90	Meet P3,P4

### CROWN

C1	32.28°	96-06-12-18-24-30-36-42-48-54-60-66-72-78-84-90	Cut to meet girdle
C2	26.39°	09-21-33-45-57-69-81-93	Cut to meet girdle
C3	17.54°	09-21-33-45-57-69-81-93	Meet C1,C2
C4	13.60°	03-15-27-39-51-63-75-87	Meet C1,C2,C3
T	0.00°	Table	Meet C3,C4



Angles for sapphire